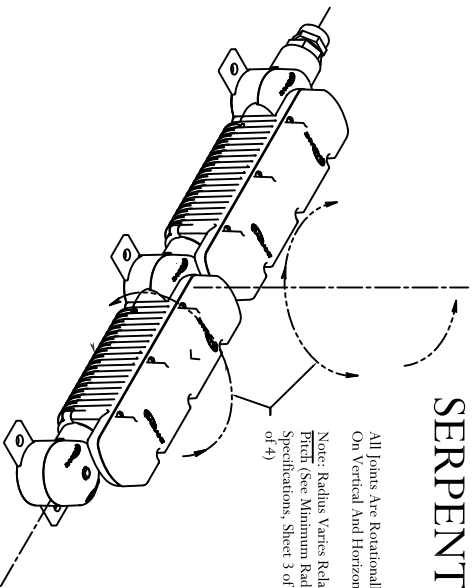


SERPENTINE SPECIFICATIONS & PROFILE DIMENSIONS

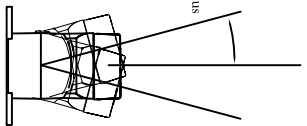
RGB

All joints are rotationally adjustable
On Vertical And Horizontal Planes.

Note: Radius Varies Relative to Lamp
Pitch (See Minimum Radii
Specifications, Sheet 3 of 4, and Sheet 4
of 4)



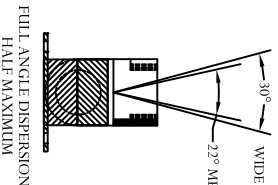
Varies
Base on Radius



30°

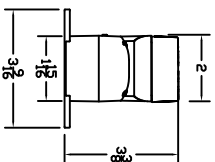
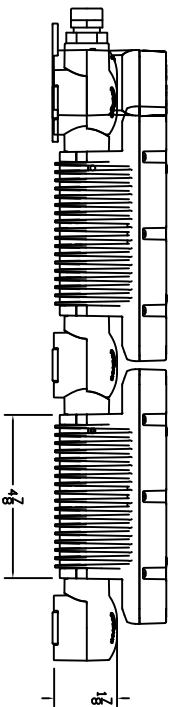
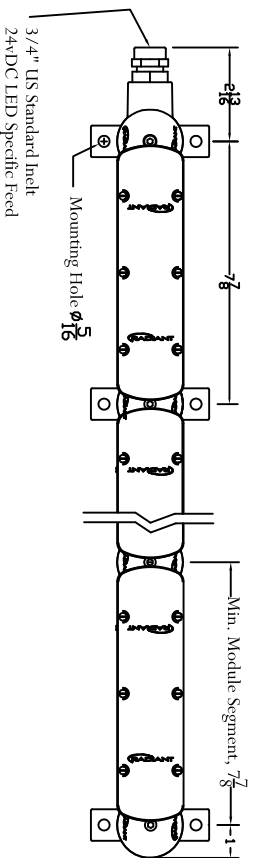
WIDE

22° MEDIUM



FULL ANGLE DISPERSION
HALF-MAXIMUM

Center to Center Mounting Holes



RGB SPECIFICATIONS

LOCATION: Suitable for Wet Locations

ALLOY MATERIAL: Non-Ferrous Die Casted Aluminum
FINISH: Silver Powder Coat
LENS MATERIAL: Impact Resistant Polycarbonate with UV Inhibitors
FINISH: Clear

OPERATION VOLTAGE: 24vdc LED Specific
POWER SUPPLIES: Sold Separately, Contact Customer Service
CONTROLS: DMX Compatible
OPTICS: 22° Medium or 30° Beam Spread of Full Angle Divergence

RGB WAVE LENGTH AND LUMENS:

RED: 252 Lumens/Foot
GREEN: 410 Lumens/Foot
BLUE: 94 Lumens/Foot

WATTAGE:

18 Watts per Foot
12 Watts per Nominal 8" Module Segment

STANDARD NOMINAL LENGTHS: 1.5', 2', 4' and 6' Lengths
STANDARD NOMINAL LOADS:

Nominal 1.5' 24 Watt Load
Nominal 2' 36 Watt Load
Nominal 4' 72 Watt Load
Nominal 6' 96 Watt Load

*FIELD CUTTING: Segment Lengths May Be Removed with Careful
Instruction. See Field Cutting Instructions for Visual Depiction and
Detailed Information.

Radiant Lighting Solutions reserves the right to change product specifications without notice
for ongoing product improvements

ALL DIMENSIONS ARE IN INCHES UNLESS OTHERWISE SPECIFIED		TITLE		8" SERPENTINE SPECIFICATIONS	
FRACTIONAL .XX .XXX	±1/32 ±0.01 ±0.005	RADIANT		DATE	05/01/2009
ANGULAR	±1/2°	10 RUCKLE AVENUE FAIRHURST, NJ 07727		SCALE	N.T.S.
		E-MAIL: Sales@radiantlighting.com CORPORATE @ RADIANT		DRAWN	J.K.
		FAX: 732-493-2941		CHK. NO.	N/A
		THIS DOCUMENT IS THE PROPERTY OF USHING WORLD INC. NO RIGHTS ARE GRANTED FOR REPRODUCTION, DISCLOSURE, OR USE.		REV.	0